

LPD3030

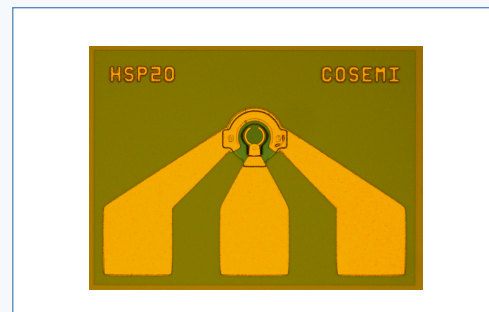
InGaAs PIN Photodiode

APPLICATIONS

- Long-haul optical networks
- Single mode datacom and telecom
- Fiber-optic transceivers, receivers and transponders

FEATURES

- Large aperture
- Low operating voltage
- Low capacitance
- Telcordia Qualified



Cosemi's LPD3030 is a mesa-structured, InGaAs/InP-based PIN photodiode offering high responsivity, low dark current and low capacitance for high bandwidth, high performance optical receiver designs.

The large, co-planar ground-signal-ground contact pads allow for convenient automated wirebonding or flip-chip attachment and low parasitic capacitance.

Proprietary and Confidential Information - Information contained in this document is proprietary and confidential to Cosemi. Accordingly, any reproduction, distribution or disclosure of such information without the express written consent of Cosemi is strictly prohibited.